

2025 MINISTRY REPORT

BOLD COMPASSION

*A year of gospel-rooted
help and hope.*



Send Relief





Dear Friends,

As we reflect on 2025, we are grateful for the ways God worked through the generosity of His people.

In communities facing hunger, disaster, and uncertainty, your gifts helped meet real needs and strengthen local churches already serving their neighbors. Through simple acts of care, families found stability, communities began to recover, and people encountered the hope of the gospel in practical and personal ways.

Send Relief serves in and through the local church, and that partnership makes a difference. Churches are present in their communities before a crisis begins and remain long after immediate needs are met.

Throughout this report, you will see examples of how God is using faithful presence to bring help and hope. Behind every number is a person, and behind every story is a church committed to loving its neighbors in Jesus' name.

Thank you for standing with those who are hurting and for partnering with Send Relief as we work together to serve others and share the gospel.

With gratitude,

Paul Chitwood
President, International Mission Board

Kevin Ezell
President, North American Mission Board



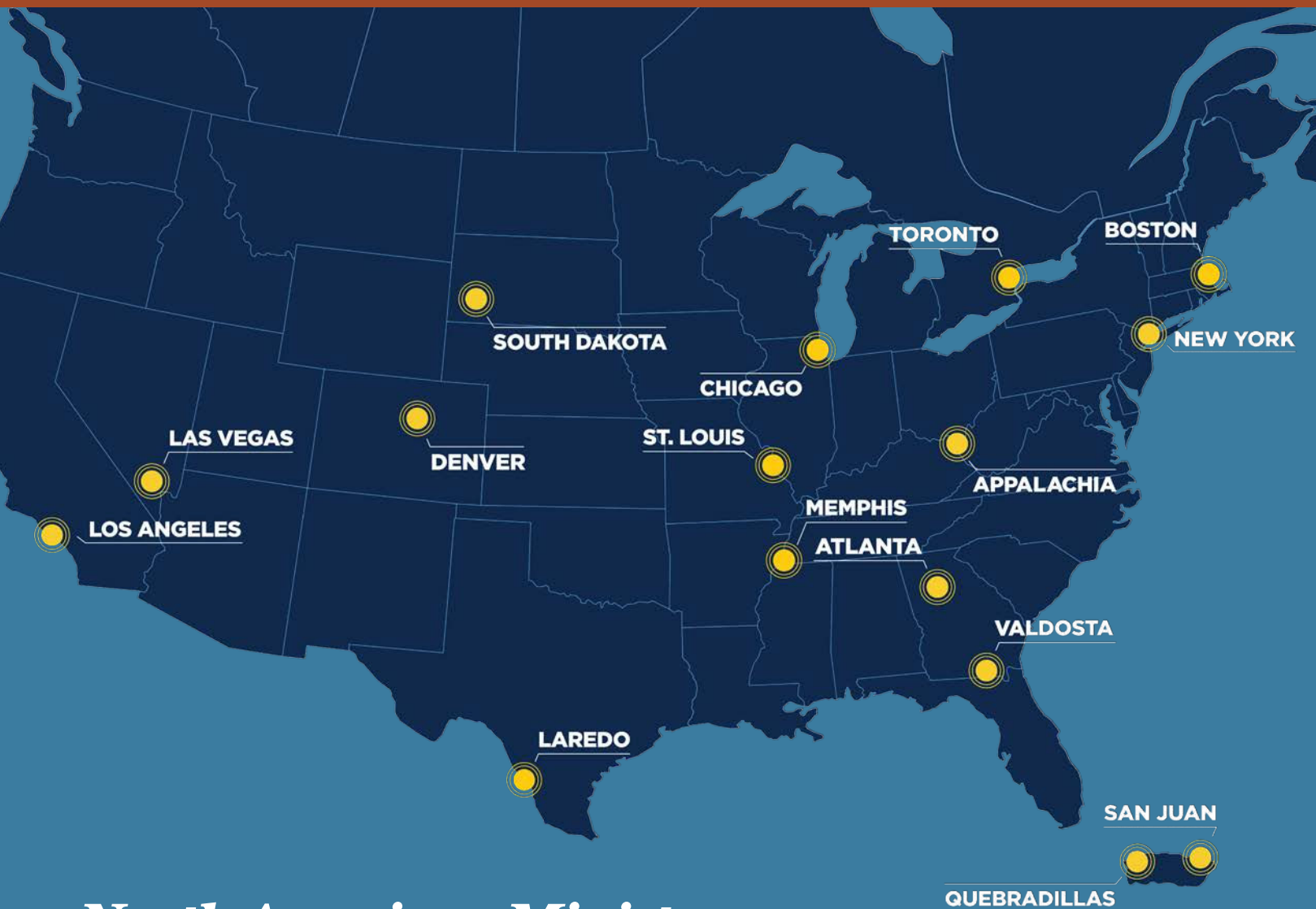
Send Relief serves as the global compassion ministry of the **Southern Baptist Convention (SBC)** and is a collaboration between the **International Mission Board (IMB)** and the **North American Mission Board (NAMB)**. We serve in and through the local church to meet physical and spiritual needs in Jesus' name.

2,505,924 PEOPLE SERVED

816,327 GOSPEL CONVERSATIONS

1,464 NEW AREAS OPENED FOR GOSPEL WORK





North American Ministry

Your generosity supports 16 Send Relief Ministry Centers serving cities and communities across North America. Through these centers and partnerships with local churches, your gifts help meet a wide range of needs—from disaster response and recovery to ongoing care for vulnerable families and neighborhoods.

When families face poverty and crisis, your support provides a warm meal, clothing, and compassion through churches already present and trusted in their communities. When needs persist beyond the immediate moment, your gifts help sustain long-term ministry, mobilize volunteers through mission trips and Serve Tours, and equip churches to continue serving with compassion and consistency.

“To know there are people that we haven’t met, but they believe in the mission, and they’re praying for us, it’s heartbreaking, in a good way.”

— Qusai Mahmud, *Chicago Ministry Center Director*

International Ministry

Around the world, your generosity supports gospel-centered compassion in places marked by crisis, poverty, and displacement. Send Relief works alongside local churches, IMB missionaries, and trusted partners who understand their communities, cultures, and challenges—often serving where access is limited and needs are great.

Through disaster response and long-term community ministry, your gifts provide practical care while strengthening local believers to walk with people through seasons of hardship. By supporting locally led efforts and sustained presence, your compassion helps restore dignity, meet urgent needs, and create space for the hope of Jesus to be shared and received.

“As we’re meeting the physical needs, we’re able to have conversations around the spiritual needs.”

— Mike Domke, *IMB Missionary, Ukraine*

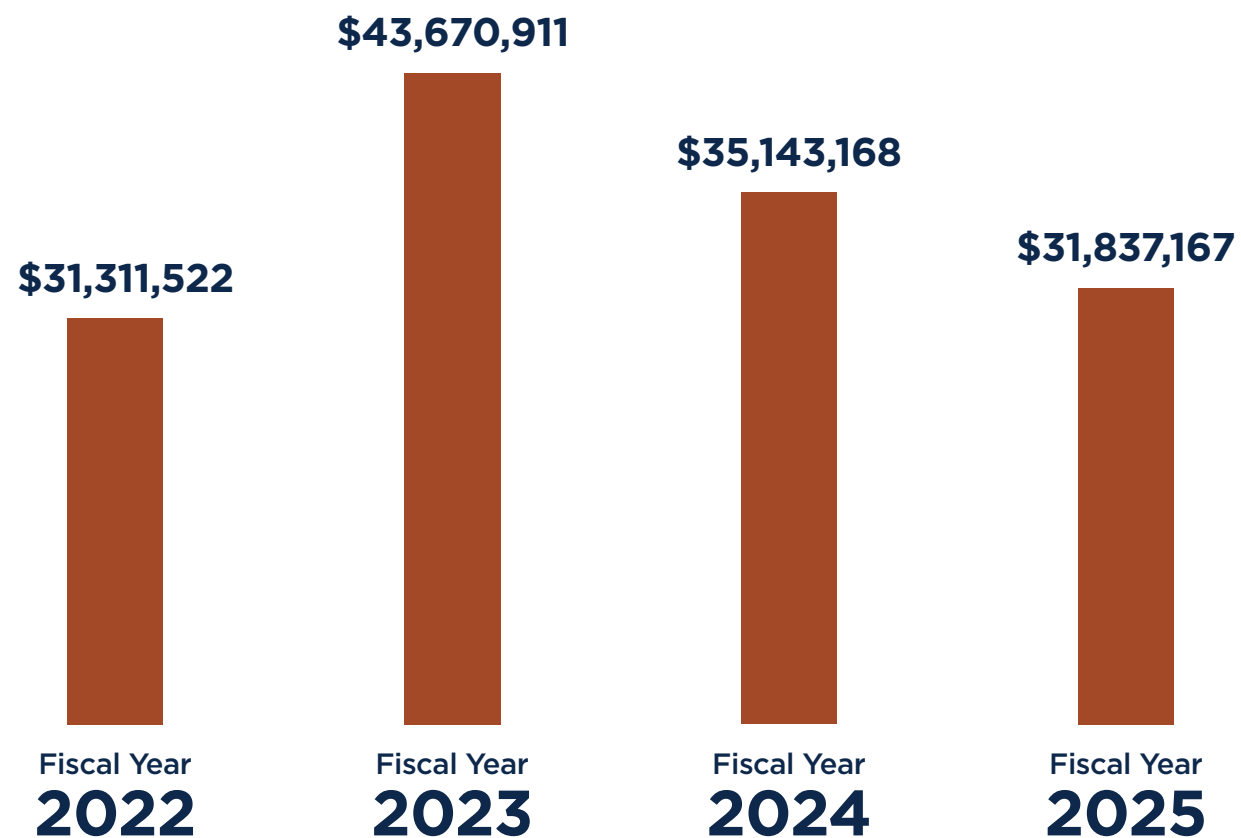


FINANCIAL REPORT

Because of the cooperative partnership between IMB and NAMB, 100% of your gifts to Send Relief go directly to ministry projects in North America and around the world. Operational expenses, including salaries, marketing, and fundraising, are covered by IMB and NAMB.

This partnership allows your generosity to have maximum impact, ensuring resources reach the field where they are needed most.

Contributions to Send Relief



Send Relief is ECFA-accredited and holds a Platinum Seal of Transparency from Candid, reflecting our commitment to stewardship, accountability, and trust.

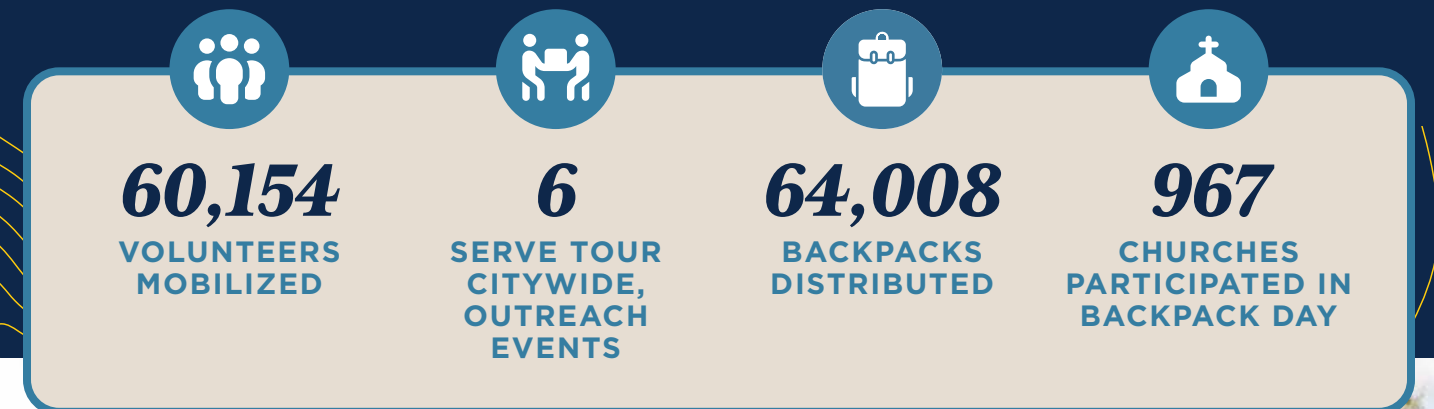
Mobilizing the Church for Compassion

WHEN SERVICE BECOMES FORMATION

When local churches are invited into hands-on compassion ministry, something deeper begins to take shape.

Across North America and around the world, churches stepped into opportunities to serve—meeting real needs, building relationships, and bearing witness to the hope of the gospel. These moments of service did more than address immediate challenges. They shaped leaders, renewed confidence, and helped churches see compassion as a natural expression of following Jesus.

As churches served together, many discovered that compassion is not a one-time response, but a posture—one that continues long after a project ends.



“Hospitality really does open up doors for the gospel. Conversations we never could have had happened because of these burgers and us knocking on doors.”

— Pastor Jarrian Wilson, *Serve Tour Volunteer*





When the Storm Passed, Hope Remained

DISASTER RESPONSE IN JAMAICA

When Hurricane Melissa swept across Jamaica, homes were damaged, crops were destroyed, and entire communities were left uncertain about what came next.

In the town of Balaclava, Devy Allen walked through her neighborhood, taking in the loss. Roofs were gone. Coconut, breadfruit, and plantain trees that once sustained families lay uprooted. Some neighbors had nowhere to live.

Still, Devy spoke with steady faith.

“We will survive because God is our help and our strength,” she said. “In His Word, He said that He is our present help in time of trouble.”

Through local churches already rooted in their communities, your gifts to Send Relief helped provide food, water, and emergency supplies. Pastors and church members served neighbors who were overwhelmed and grieving, offering practical help alongside prayer and encouragement.

“We who are alive, we are giving God thanks,” Devy shared. “Thank you for Send Relief and for the care packages. God bless you all.”

Long after the storm passed, the church remains—trusted, present, and ready to serve. In the midst of devastation, compassion opened the door for hope grounded in Christ.

“We will survive because God is our help and our strength.”

— Devy Allen, Hurricane Survivor, Jamaica

Nourishment That Opened Doors

HOW NUTRITION TRAINING CREATED PATHWAYS TO HEALTH AND HOPE

In northern Nigeria, hunger often limits more than physical strength. It quietly shapes daily life, learning, and opportunity—especially for families navigating ongoing food insecurity.

Grace, a pastor’s wife and seminary student, understood this firsthand. Like many families in her community, her children struggled with poor nutrition. Access to nourishing food was limited, and the effects were visible in their health and energy.

Through a soybean-based nutrition training course supported by your gifts to Send Relief, Grace joined dozens of other women to learn how to prepare nutrient-rich meals using locally available ingredients. Together, they cooked, shared meals, and gained practical skills they could bring back to their homes and villages. Each participant received a supply of soybeans—not just for immediate use, but to sustain their families and share with others in their community.

But something more began to grow.

“We invited women of other faiths to join us,” Grace said. “Now we’re friends, and we’re finding ways to share Christ’s love naturally.”

As trust deepened, conversations followed. What began as nutrition training became community. Relationships formed around shared meals led to Bible studies and ongoing connection with local churches.

Through sustained presence and locally led ministry, physical nourishment became a bridge—strengthening families, restoring dignity, and opening doors for the gospel to be shared in everyday life.

“Now we’re friends, and we’re finding ways to share Christ’s love naturally.”
— Grace, Participant in Nutrition Training, Nigeria



SOYBEAN PROJECT IMPACT:

418

INDIVIDUALS
TRANED

6,700

PEOPLE
IMPACTED

2

BIBLE STUDIES
STARTED

600

GOSPEL
CONVERSATIONS

HURRICANE MELISSA RESPONSE:

10,000

WATER FILTERS
DISTRIBUTED

170

SBDR VOLUNTEERS
DEPLOYED

80

ROLLS OF TEMPORARY
ROOFING DISTRIBUTED

From One Weekend to a Renewed Calling

SERVE TOUR AND THE POWER OF PRESENCE

Pastor Steve Brown wasn't sure what to expect when he agreed to help lead a grill walk during Serve Tour in Evansville, Indiana.

After decades in ministry, he wondered if something so simple could really matter.

That changed as he stepped into a neighborhood just blocks from his church. Surrounded by boarded-up homes and families eager to talk, Steve realized how far his focus had drifted from the people nearest his doors.

During one conversation, an older man listened as Steve gently shared the gospel. Though he knew about Jesus, he had never personally placed his trust in Him. Right there, surrounded by neighbors and children, the man prayed to receive Christ.

"I just got rejuvenated," Steve said. "This reminded me this is what I'm called to."

Serve Tour Evansville mobilized hundreds of volunteers to meet needs across the city, but its deeper impact was what volunteers learned and took home to their local churches. Pastors and congregations rediscovered compassion as a calling, not an event—something meant to shape everyday ministry, not just a weekend.

Your giving is a catalyst for service, renewing vision and confidence to keep showing up long after the volunteers went home.



Fighting Darkness in the Bright Lights of The Strip

LIFE CHANGE AT THE SEND RELIEF LAS VEGAS MINISTRY CENTER

Las Vegas is a city known for what happens after dark.

Built on excess, escape, and easy answers, it draws people looking for relief from something. Addiction. Loss. Desperation. And when the lights fade, many are left with fewer options than they had before.

At the Lovewell Center, Send Relief's Vegas ministry center, the church shows up differently.

Here, people experiencing homelessness or poverty are met with steady care and dignity. Members receive food, clothing, and access to showers. Just as important, they are welcomed into conversations that matter. Staff and volunteers take time to learn names, hear stories, and speak openly about Jesus, offering the hope of the gospel in the context of trust and relationship.

"D" arrived in Las Vegas hoping for opportunity. Instead, he found instability. Couch surfing and unsure how to move forward, he accepted an invitation from a close friend who had been connected to the Lovewell Center for years.

At Lovewell, D met with a staff member who helped him map out practical next steps toward stability. Over time, he found housing and consistent work. As his life began to steady, something deeper took root.

D now volunteers with Send Relief at the Lovewell Center, serving others who are facing the same uncertainty he once carried. Today, he meets regularly with staff to plan his next goal: becoming an EMT so he can serve his city and help others in crisis.

Your gifts support the steady, gospel-centered work of Send Relief Ministry Centers. In places shaped by brokenness, the church remains present, meeting practical needs, restoring dignity, and pointing people to the lasting hope found in Jesus Christ.



"This reminded me this is what I'm called to."
— Pastor Steve Brown,
Serve Tour Volunteer

SERVE TOUR IMPACT:

4,544

VOLUNTEERS MOBILIZED

325

CHURCHES ENGAGED

6,428

GOSPEL CONVERSATIONS

MINISTRY CENTER IMPACT:

16

NORTH AMERICAN
MINISTRY CENTERS

116,276

INDIVIDUALS
SERVED

11,672

VOLUNTEERS
ENGAGED

705

FIRST-TIME CHURCHES
MOBILIZED



Urgent Help, Eternal Hope

Across North America and around the world, God is at work through the compassion of the local church—faithfully present, deeply rooted, and pointing people to the hope of Christ.



Hope Rises After the Shaking

LONG-TERM RECOVERY AND GOSPEL WITNESS IN MYANMAR

When a powerful earthquake struck Myanmar, families lost homes, livelihoods, and any sense of stability.

Ma Aye, a mother and manual laborer, believed owning a home again was impossible. Months later, she and her family moved into a safe, newly built house.

“We never imagined we would own a house again,” she said. “We are incredibly happy. We thank the donors, and we thank God.”

Because Send Relief already worked through trusted local partners, help arrived quickly—and remained. Churches and community leaders worked together to rebuild homes, provide clean water, and walk alongside families through recovery.

Your gifts fueled this response.

As physical needs were met, hearts opened. Families gathered to pray and worship. Baptisms followed. In communities where Christians are a small minority, the gospel advanced through steady presence and faithful care.

Long after the ground stopped shaking, restoration continued—rebuilding lives and bearing witness to hope that does not fade.

“We thank the donors, and we thank God.”
— May Aye, Earthquake Survivor, Myanmar

MYANMAR EARTHQUAKE RESPONSE:

28

HOMES REBUILT
(MORE UNDERWAY)

3,215

FAMILIES SERVED

448

BAPTISMS

Thank You

Because of your generosity, the church showed up where people needed it most.

Your partnership made it possible to serve with care, dignity, and gospel conviction. Lives were touched. Churches were strengthened. Communities encountered the love of Christ through faithful presence, practical help, and gospel proclamation.

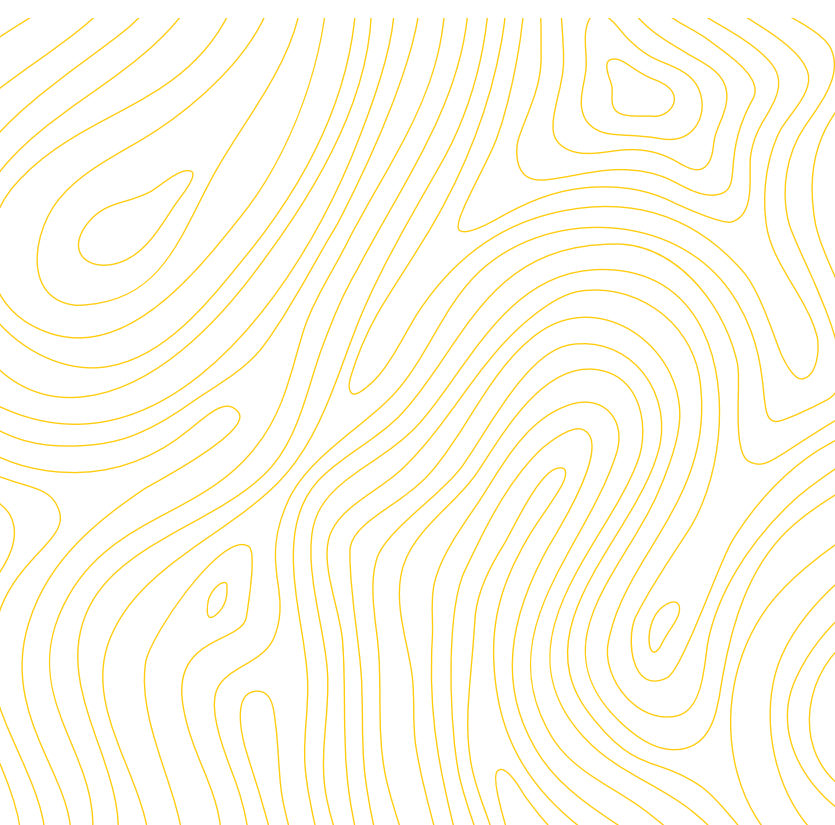
Because you give, the church can respond quickly, stay longer, and serve with humility wherever suffering exists.

As Scripture reminds us:

Let us not get tired of doing good, for we will reap at the proper time if we don't give up.

Galatians 6:9 (CSB)

Thank you for being part of this work.



Send Relief



SendRelief.org